



8. Alumni Newsletter - News from the University

Dear Alumni,

Today, you receive the latest information from the university on the following points:

1. Dates for the second half of 2024



We report again on the most important dates in the coming months. The information offer is expressly accompanied by a warm invitation for you to actively participate in the events. We look forward to seeing you.

Dates from the University:

- **18.09.2024, 10:00 - 16:30:** Conference: [Wind of Change: Paradigm Shift for Elderly Care, ASH Berlin in cooperation with domino-coaching Foundation & HTW.](#)
- **02. - 06.12.2024:** Week of Study Orientation ONLINE – ASH Berlin

Dates and News from the Study Programs:

- **Application deadlines for study programs:** You and/or your employees and colleagues can apply for most study places for the WiSe 2024/2025 from 1 July 2024 to 15 July 2024. The exact application deadlines for each program can be found here: Link. <https://www.ash-berlin.eu/studium/studiengaenge/>
- **14.11.2024, 18:00 – 20:00: online,** Information session of the continuing education master's program: Social Work: **Clinical Social Work (M.A.): Career Goal: Therapist and/or Counselor.** Information about necessary registration at the beginning of the winter semester on the Career Service pages of ASH: <https://www.ash-berlin.eu/studium/einrichtungen-fuer-studierende/karriereplanung/veranstaltungen/>

- **Master's Program: Social Management: NEW FORMAT:** The new structure of the master's program in social management consists of even **more online modules** and only one presence week per semester. Thanks to this innovation from October 2024, working professionals will be better enabled to combine studies, work, and family. <https://akademie.org/studiengaenge/sozialmanagement/>

2. Focus on Study Programs

In the future, we will introduce two master's programs in each newsletter. Do not hesitate to contact the program coordinators. Get advice if you have further questions about the program.

- **Master Practice Research in Social Work and Pedagogy (M.A. PSP)**



Practice research is oriented towards questions in the professional field of social work and childhood pedagogy. The research-oriented program is aimed at graduates with a bachelor's degree in the SAGE field (Social Work, Health, Education, and Care). It includes scientific-empirical research and the development of innovative concepts for social work and pedagogy. The goal is to understand global, societal, and local transformation processes and to develop practice-relevant solutions. The Master PSP offers 40 study places each semester. There are no tuition fees. More info can be found on the website. <https://www.ash-berlin.eu/studium/studiengaenge/master-praxisforschung-in-sozialer-arbeit-und-paedagogik/profil/>

- **Master Social Work - Critical Diversity and Community Studies (M.A. KriDiCo)**

The practice-oriented MA KriDiCo qualifies individuals to contribute to more social justice through power-critical, intersectional, and community-oriented transformations together with state institutions, free sponsors, social movements, and interest groups, neighborhoods, and communities. It is aimed at graduates from the SAGE field or related disciplines. The program targets individuals who are already engaged in changes within their organization, community, or society through their academic, activist, civil society, or professional practice and who want to further develop their practice through active exchange with others. The program starts every summer semester and can be studied full-time or part-time. More about KriDiCo can be found online. <https://www.ash-berlin.eu/studium/studiengaenge/master-soziale-arbeit-kritische-diversity-und-community-studies-kridico/profil/>

3. Event Announcements Online

In addition to the event dates compiled for you under the first point, you can find all event announcements as usual on the ASH Berlin website using the following [link](#). It will also inform you whether the respective event takes place digitally or on-site.

4. Staying Connected – This is how the 2nd Alumni Day at ASH Berlin was



On 20 June 2024, our 2nd Alumni Day took place at ASH Berlin in a hybrid format. We are delighted with the encounter and the realized professional and personal exchange during the lecture on the state and developments of the ASH Berlin Alumni Network (Kerstin Miersch, Dipl.Päd.+MA, Alumni Manager) in the two workshops: Personnel Development Along Our Lifecycles and Addressing the Skilled Labor Shortage (Prof. Dr. Claudia Winkelmann) and Evidence-Based Work in Therapy and Nursing

Professions (Prof. Dr. Elke Kraus). We thank everyone who attended and for the positive feedback: +More of it+. We had very interesting conversations and heard the feedback: +Staying connected+.

The 2nd Alumni Day ended with mutual input and concrete suggestions for networking in the future together at the summer party. The positive voices motivate us, and we are already looking forward to the next Alumni Day and another meeting with you. We will report more extensively on the event on the Alumni Network website and keep you informed.

<https://www.ash-berlin.eu/hochschule/vernetzung/alumni-netzwerk>



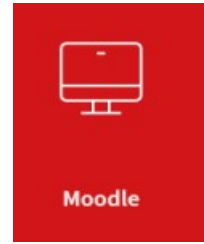
5. Are you an ASH Berlin Alumnus/Alumna and an Artist?



We are looking for university alumni who are active in the arts. Any form of representation is welcome. Perhaps you would like to enrich one of our events, such as the Alumni Day, with your artistic contribution? Yes? Then please let us know: alumni@ash-berlin.eu

6. Alumni Moodle Platform at ASH Berlin

We have set up a Moodle platform on the topic +Alumni at ASH+ and cordially invite you to communicate in this virtual space. This way, you can directly influence the development process of the Alumni Network with expertise, ideas, and interests. We hope this is also in your interest. Interested parties from the university's teaching and service departments are also welcome to participate.



Moodle is a learning and communication platform that allows information such as texts, images, videos, and statistics to be provided and used electronically, regardless of location and time. It also allows for contact with each other. The exchange of thoughts and ideas is possible.

So far, 24 alumni are participating in the information exchange on this platform. Would you like to join? Then simply contact us at: alumni@ash-berlin.eu. We will inform you about the next steps and are happy to answer questions.

As a member of this platform, please also feel invited to participate in the regular alumni network meetings of ASH Berlin. The invitation is issued via the Moodle Alumni platform.

7. Career Service Offers

The diverse offer of the **Career Service of ASH** includes free access to the [job board](#) every semester, [free events](#) (especially for ASH graduates!), and **individual consultations** and **coaching** around the topics of job applications, career entry, and career development.

Consultation: Do you want career advice as a graduate to gain clarity about your next professional steps or a possible career change? Then arrange an individual appointment with us via the following email: careerservice@ash-berlin.eu.

Job & Career: Our **job board** contains job advertisements in the **educational, health, and social sectors**. If you have since become an employer or work in HR or recruiting, you can also use our free recruiting portal to present yourself to our students and alumni with a company profile and post job offers. A free registration for the portal is possible via this link.

Further **information**, our current **event flyer**, and **news** can be found directly on the [ASH Career Service website](#).

8. Become a Scholarship Provider and Study Supporter

Fortunately, three new scholarship recipients for the [Germany Scholarship](#) from the bachelor's and consecutive master's programs of ASH Berlin will be selected again for the winter semester 2024.

Are you not only an ASH alumnus but also currently a **student at ASH Berlin**? Then feel free to **apply for one of the newly awarded scholarships by 18.08. 2024**. More information and the application documents can be found [here](#).

The funding is shared 50% by the Federal Ministry of Education and Research (BMBF) and private sponsors. As last year, this includes Unfallkrankenhaus Berlin and the Ferdinand and Charlotte Schimmelpfennig Foundation.

If you also want to **support young talent in the future**, please contact Elisabeth Hanske: careerservice@ash-berlin.eu. With just 150 euros a month (1,800 euros/year), you can sponsor a scholarship for high-performing and socially committed students worth 300 euros (3,600 euros/year) monthly. Your funding amount is doubled by the federal government and can be claimed for tax purposes.

Further information can be found in this [flyer](#).



9. Founders' Center of ASH

Since April 2024, the Founders' Center established as part of the ASHEXIST project has become an independent scientific institution. The [offers of the Founders' Center](#) (including start-up advice and coaching, events, EXIST scholarships) can be found on the ASH website under "Facilities for Students." On the new pages, you will also find [portraits of founders](#) and further information about [self-employment](#). **Would you like to be featured on our pages as an alumnus with your start-up, self-employment, or project? Then feel free to contact us at: gruenderinnen-zentrum@ash-berlin.eu.**

Consultation: Do you want start-up advice as a graduate to gain clarity about a (possible) start into self-employment? Then arrange an individual appointment with us using the following form.

Further information and news can be found directly on the ASH Founders' Center website. <https://www.ash-berlin.eu/studium/einrichtungen-fuer-studierende/gruenderinnenzentrum/uebersicht/>

Call for Participation in our Survey: "Self-Employment and Start-Up at ASH Berlin - Experiences and Potentials"

The goal of this survey is to identify factors for self-employment in the SAGE area and to capture start-up-related experiences. We would be happy if you would participate so that we can derive recommendations for action for ASH and other SAGE universities from the results. Participation does not require start-up experience or intention; participate now! <https://survey.ash-berlin.eu/s/33ad3bab/de.html>

10. Looking for Further Education? Scientifically Based Continuing Education at the Center for Continuing Education



[The Center for Continuing Education](#) welcomes all who have already obtained a first qualifying university degree in the SAGE area! We invite you to take an interested look at our continuing [education program](#). We offer a wide range of one- to five-day seminars and certificate courses that enable further qualification at the master's or bachelor's level under the scientific guidance and supervision of university teachers. In addition, you can also book seminars for your institution with us.

11. Alumni Portraits

Year after year, many graduates leave ASH Berlin. In which fields are they working after graduation? What career paths do they take, and in which professional positions do they influence and contribute to the development of society? We introduce you to one of our graduates in each newsletter. Today, **Frank Aschoff**: Degree program in Biographical and Creative Writing. <https://alice.ash-berlin.eu/menschen/am-besten-lernt-man-etwas-indem-man-es-anderen-menschen-erklaert/>



We also regularly publish our alumni portraits on our [website](#) and in Alice, the ASH Berlin university magazine.

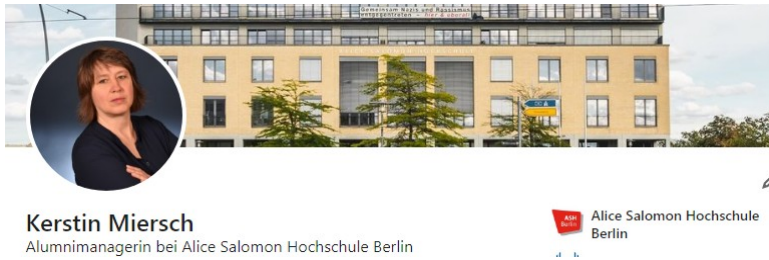
12. Press and Newsroom

The magazine of ASH Berlin is published twice a year and provides information about university life: The current "Alice" with the title: Meeting Point Campus can be read online here.

There is also the option to subscribe to the ASH Berlin newsletter. It is published monthly and is filled with current information about life at the university.

To subscribe, please send a simple email to: nletter@ash-berlin.eu with the subject "Newsletter Subscription." We wish you much enjoyment and inspiration while reading!

13. Alumni of ASH Berlin on LinkedIn



ASH Berlin has a LinkedIn chat for alumni, which we gladly recommend as a communication space: <https://www.linkedin.com/in/kerstin-miersch-9105ab261/>

Of course, there is also a LinkedIn presence of ASH Berlin. <https://www.linkedin.com/school/alice-salomon-hochschule-berlin/>

On this, you will also find a tab "Alumni." Here, all persons who state in their LinkedIn profile that they have studied at ASH Berlin are networked. <https://www.linkedin.com/school/alice-salomon-hochschule-berlin/people/>

By the way, there are also some job offers of the university on LinkedIn: <https://www.linkedin.com/jobs/alice-salomon-hochschule-berlin-jobs-worldwide>

And the job offers advertised in the ASH Berlin Job Teaser can be found here: <https://ash-berlin.jobteaser.com>

14. We Say Thank You

- **Graduate Survey of ASH in Spring 2024**

We would like to thank you very much for your great participation in our extensive survey! Thanks to a response rate of about 30%, we can gain valuable insights into various study courses and your current employment situation. Your feedback is invaluable and helps us develop targeted improvement measures. The detailed results will be published shortly on the ASH Berlin website. We will inform you.



Absolvent_innenbefragung 2024

- **Studycheck**



Do you like talking about your study time and want to share your experiences? Help prospective students with their decision by rating the study program: <https://www.studycheck.de/> bewerten.

With best regards,

Mit herzlichen Grüßen - Kerstin Miersch – Alumnimanagement der ASH Berlin,
Elisabeth Hanske – Leiterin Career Service der ASH Berlin, Deutschlandstipendium,
Prof. Dr. Claudia Winkelmann – Schwerpunktprofessur für Qualitätsgesicherte
Strukturentwicklung in Studium und Lehre, ASH Berlin

In case of any disputes regarding these texts, the German version shall prevail.